

**PROUD AMERICAN MANUFACTURER**

**ACAT**

TEL. 81 8354 8910  
[www.acatmexicana.com](http://www.acatmexicana.com)

# Scotchman™

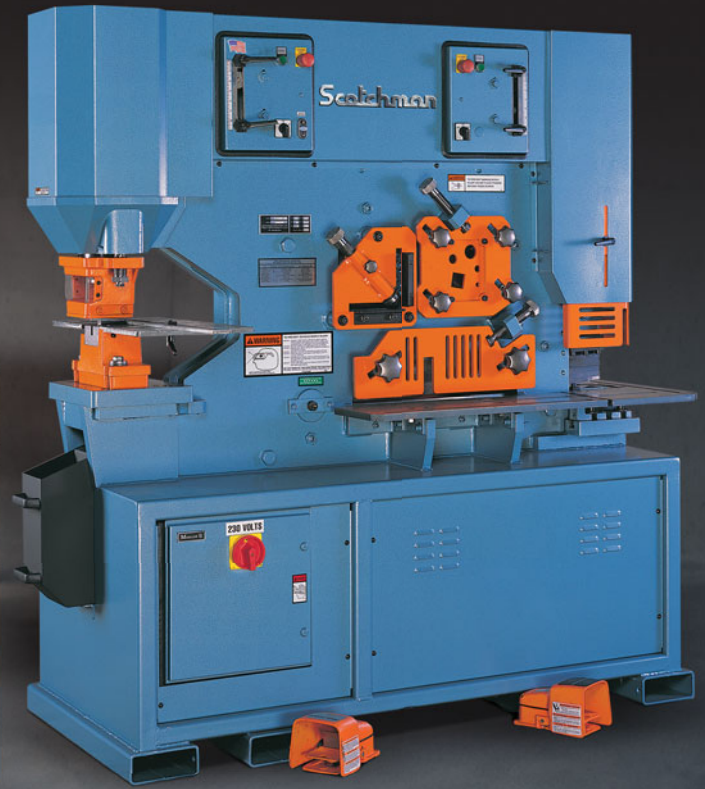
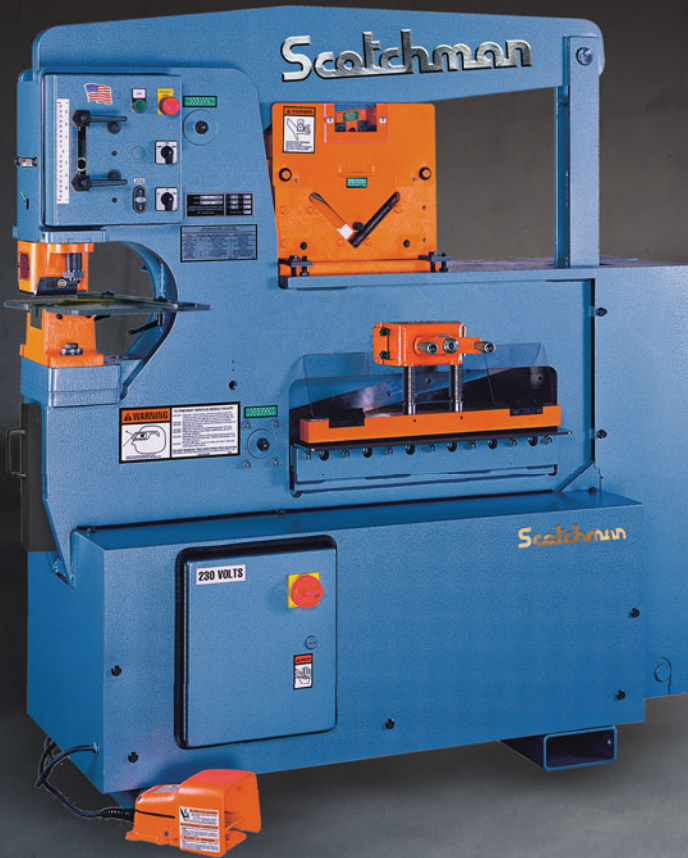
**Metal Fabricating Solutions**

*Ironworkers | Cold Saws | Automatic Sawing Systems | Hydraulic Press | Pipe Notchers | Measuring Devices*



# Ironworkers

IRONWORKERS



## Single & Dual Operator Hydraulic Ironworkers

### American Made with 3-Year Warranty

Backed by the Scotchman reputation of superior quality and dependability, our ironworkers are built tough to last generations. Models range in capacity from 45-150 tons and are available in two distinct styles.

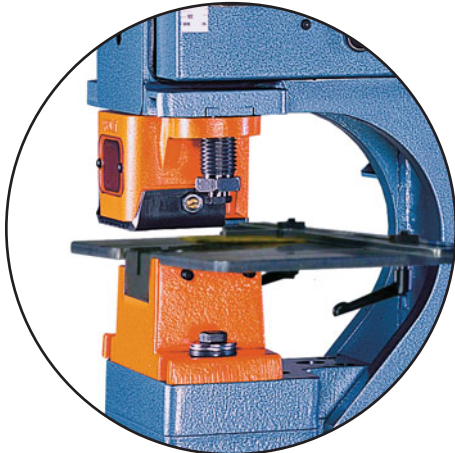
- Our unique Component Tool Table style provides flexibility to swap-out tooling quickly for those quick turnaround jobs. The variety of tooling options available for this style gives it unmatched versatility to any other machine on the market.
- Fully-Integrated Ironworkers feature built-in tools and are suited best for repetitive, higher volume projects.

#### CAPACITY CHART QUICK REFERENCE GUIDE ... 5-6

|                       |             |
|-----------------------|-------------|
| 45 TON                | ..... 7-8   |
| 50 TON                | ..... 9-10  |
| 65 TON                | ..... 11    |
| 70 TON                | ..... 12    |
| 85 TON                | ..... 13-14 |
| 90 TON                | ..... 15    |
| 95 TON                | ..... 16    |
| 120 TON               | ..... 17-18 |
| 135 TON               | ..... 19    |
| 150 TON               | ..... 20    |
| OPTIONAL TOOLING      | ..... 21-22 |
| CUSTOM TOOLING        | ..... 23    |
| IN-STOCK PUNCH & DIES | ..... 24    |
| PRODUCTION SHEAR      | ..... 25    |



# Component Tool Style Workstations

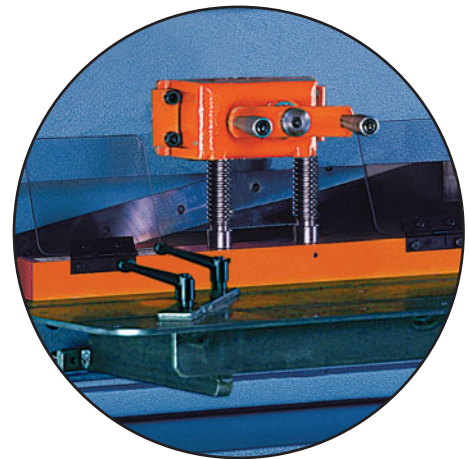


## **PUNCH:**

The punch station is one of the most functional standard tools on any ironworker. A full range of punches & dies in standard shapes and increments are available in-stock for your various punching needs, plus tooling can be custom built for your special application. This workstation can also be used for additional applications beyond strictly punching.

## **FLAT BAR SHEAR:**

A flat bar shear is a standard workstation on all ironworkers, but not all bar shears are created equal. All Scotchman ironworkers have a shear with a variable rake angle which minimizes distortion of the cut and increases cut time for a faster shear cycle. From 6" to 24" in width, each Scotchman ironworker is equipped with the best shear for its capacity. Hold-downs are easily adjustable with good visibility, and the reversible shear blades provide a long life of plate shearing.

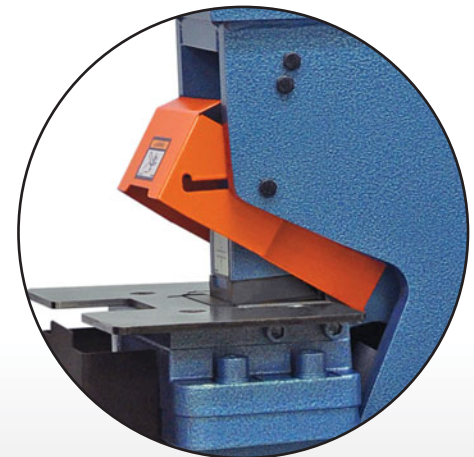


## **ANGLE SHEAR:**

This useful tool is standard on every Scotchman ironworker. Produces a distortion free cut, and can easily & quickly 45° miter cut.

## **NOTCHER:**

Ideal for notching and nibbling of plate and angle iron. When versatility is key, a copier notcher is essential. Standard workstation on most Scotchman ironworker models, but available as an option on the models it is not standard.



## **TOOL TABLE WORKSTATION FOR COMPONENT TOOLS:**

When versatility and flexibility are key, our unique tool table workstation is indispensable! This tool table design is unique to Scotchman and creates a workstation that is fully customizable allowing an extensive variety of different tooling options to be used and switched out easily, without losing the punch station. This workstation acts as an additional power source which allows users to tailor the machine to their individual needs.

Scotchman has a variety of tooling options available as well as a full-time custom tooling department making the options nearly endless.



# Ironworker Capacities

IRONWORKERS

|   |                          | 45 ton  | 50 ton  | 50 ton  | 65 ton   | 70 ton  | 85 ton  |
|---|--------------------------|---|---|---|--|---|---|
|   |                          | Single Operator   | Single Operator   | Single Operator   | Single Operator  | Dual Operator   | Single Operator   |
| Machine Design Style  |                          | Component Tool Table  | Component Tool Table  | Component Tool Table  | Component Tool Table   | Component Tool Table  | Fully Integrated Tools  |
| <b>Punch</b>  | <b>Throat Depth</b>      | 4-1/4"  | 6"  | 4"  | 9"   | 9"  | 10"   |
|   | <b>Tonnage</b>           | <b>45 ton</b>   | <b>50 ton</b>   | <b>50 ton</b>   | <b>65 ton</b>  | <b>70 ton</b>   | <b>85 ton</b>   |
|   | <b>Capacity</b>          | 1-1/8" in 1/2"  | 1-1/4" in 1/2"<br>13/16" in 3/4"  | 1-1/4" in 1/2"<br>13/16" in 3/4"  | 1-1/16" in 3/4"  | 1-1/8" in 3/4"  | 1-1/16" in 1"   |
|   | <b>Max. Hole</b>         | 2-1/4"  | 2-1/4"  | 2-1/4"  | 4"   | 4"  | 4"  |
| <b>Bar Shear</b>  | <b>Blade Length</b>      | <b>6"</b>   | <b>14"</b>  | <b>14"</b>  | <b>24"</b>   | <b>24"</b>  | <b>20"</b>  |
|   | <b>Max. Capacity</b>     | 1/2" x 4"   | 3/4" x 4"   | 3/4" x 4"   | 1" x 6"  | 1" x 6"   | 1" x 12"  |
|   |                          | 3/8" x 6"   | 1/2" x 8"<br>3/8" x 10"<br>1/4" x 14"   | 1/2" x 8"<br>3/8" x 10"<br>1/4" x 14"   | 3/4" x 10"<br>1/2" x 12"<br>3/8" x 16"<br>1/4" x 24"                                 | 3/4" x 10"<br>1/2" x 14"<br>3/8" x 24"  | 3/4" x 20"  |
| <b>Angle Shear</b>  | <b>Angle Shear, 90°</b>  | 3" x 3" x 5/16"   | 4" x 4" x 3/8"  | 4" x 4" x 3/8"  | 6" x 6" x 3/8"<br>5" x 5" x 1/2"   | 6" x 6" x 1/2"  | 6" x 6" x 1/2"  |
|   | <b>Angle Shear, 45°</b>  | 2" x 2" x 1/4"  | 2" x 2" x 1/4"  | 2" x 2" x 1/4"  | 3" x 3" x 3/8"<br>4" x 4" x 1/2" (with bar shear)                                    | 3" x 3" x 3/8"<br>4" x 4" x 1/2" (with bar shear)                                     | 4" x 4" x 1/2" (with bar shear)   |
| <b>Channel Shear</b>  | <b>Size Avail.</b>       | up to 3"  | up to 3"  | up to 3"  | 2" to 5" adjustable  | 2" to 6" adjustable   | 2" to 6" adjustable   |
| <b>Rod Shear</b>  | <b>Round Rod</b>         | 1/4" to 1",<br>5 cavity   | 1/4" to 1",<br>5 cavity   | 1/4" to 1",<br>5 cavity   | 1/4" to 1-1/4",<br>9 cavity  | 1/4" to 1-1/4",<br>9 cavity   | 1-1/2",<br>1 cavity   |
|   | <b>Square Rod</b>        | 1/4" to 3/4",<br>1 cavity   | 1/4" to 3/4",<br>1 cavity   | 1/4" to 3/4",<br>1 cavity   | 1/4" to 1",<br>1 cavity  | 1/4" to 1",<br>1 cavity   | 1-1/4",<br>1 cavity   |
| <b>Tube Shear</b>   | <b>Square Tube</b>       | 1/2" to 1",<br>12 gauge   | 1/2" to 1",<br>12 gauge   | 1/2" to 1",<br>12 gauge   | 1/2" to 2",<br>12 gauge  | 1/2" to 2",<br>12 gauge   | 1/2" to 2",<br>12 gauge   |
| <b>Notcher</b>  | <b>Rectangle</b>         | 2" x 1-3/4" x 1/4"  | 2-1/2" x 3" x 5/16"<br>2-1/2" x 2-3/4" x 3/8"                                       | 2-1/2" x 3" x 5/16"<br>2-1/2" x 2-3/4" x 3/8"                                       | 2" x 2-1/2" x 3/8"   | 3" x 5" x 3/8"<br>3" x 4" x 1/2"  | 3" x 5" x 1/2"  |
|   | <b>90° V</b>             | 6" x 6" x 1/8"  | 6" x 6" x 1/8"<br>3" x 3" x 1/4"  | 6" x 6" x 1/8"<br>3" x 3" x 1/4"  | 6" x 6" x 5/16"  | 6" x 6" x 5/16"   | 3" x 3" x 1/2" (Notcher Station)<br>6" x 6" x 5/16" (Punch Station)                   |
|   |                          | <b>Pipe (Sch. 40)</b>   | 3/4" to 2"  | 3/4" to 2"  | 3/4" to 2"   | 3/4" to 2"  | 3/4" to 2"  |
| <b>Bending</b>  | <b>Brake Size Avail.</b> | 6", 8", 12",<br>6" Open-End   | 6", 8", 12",<br>6" Open-End   | 6", 8", 12",<br>6" Open-End   | 12", 24",<br>6" Open-End   | 12", 24",<br>6" Open-End  | 12", 24",<br>6" Open-End  |
| <b>Picket Tool</b>  | <b>Size</b>              | 1/2", 3/4", & 1"<br>(16 gauge)  | 1/2", 3/4", & 1"<br>(16 gauge)  | 1/2", 3/4", & 1"<br>(16 gauge)  | 1/2", 3/4", & 1"<br>(16 gauge)   | 1/2", 3/4", & 1"<br>(16 gauge)  | 1/2", 3/4", & 1"<br>(16 gauge)  |
| <b>Motor</b>  | <b>Standard</b>          | 110v  | 230/460v, 3 ph  | 230/460v, 3 ph  | 230/460v, 3 ph   | 230/460v, 3 ph  | 230/460v, 3 ph  |
|   | <b>Optional</b>          | 220v, 1 ph  | 220v, 1 ph  | 220v, 1 ph  | 220v, 1 ph   | 220v, 1 ph  | 220v, 1 ph  |
| <p><b>*Not all functions &amp; capacities are standard, but can be achieved with optional tooling.</b></p> <p><b>*Custom built tooling is available upon request.</b></p> |                          |  |  |  |  |  |  |
| <b>Model Name</b>   |                          | <b>Porta Fab 45</b>   | <b>50514-EC</b>   | <b>5014-ET</b>  | <b>6509</b>  | <b>DO 70</b>  | <b>FI 85</b>  |
|   |                          | Page 7  | Page 9  | Page 9  | Page 11  | Page 12   | Page 13   |



# Quick Reference Guide

IRONWORKERS

| 85 ton  |  | 90 ton  |  | 95 ton  |  | 120 ton   |  | 120 ton   |  | 135 ton  |  | 150 ton   |  | Production Shear  |  |                                      |  |
|---|--|---|--|---|--|---|--|---|--|--|--|---|--|---|--|--------------------------------------|--|
| Dual Operator   |  | Single Operator   |  | Dual Operator   |  | Single Operator   |  | Dual Operator   |  | Dual Operator  |  | Dual Operator   |  | Single Operator   |  |                                      |  |
| Fully Integrated Tools  |  | Component Tool Table  |  | Component Tool Table  |  | Component Tool Table  |  | Component Tool Table  |  | Component Tool Table   |  | Component Tool Table  |  | Shear Only  |  |                                      |  |
| 14"   |  | 12"   |  | 9"  |  | 12"   |  | 12"   |  | 12"  |  | 12"   |  | N/A   |  |                                      |  |
| 85 ton  |  | 90 ton  |  | 95 ton  |  | 120 ton   |  | 120 ton   |  | 135 ton  |  | 150 ton   |  |   |  |                                      |  |
| 1-1/16" in 1"   |  | 1-1/8" in 1"  |  | 1-3/16" in 1"   |  | 1-1/2" in 1"  |  | 1-1/2" in 1"  |  | 1-11/16" in 1"   |  | 1-7/8" in 1"  |  |   |  |                                      |  |
| 4"  |  | 4"  |  | 4"  |  | 4"  |  | 4"  |  | 4"   |  | 4"  |  | N/A   |  |                                      |  |
| 20"   |  | 24"   |  | 24"   |  | 24"   |  | 24"   |  | 24"  |  | 24"   |  |   |  |                                      |  |
| 1" x 14"<br>3/4" x 20"  |  | 1" x 8"<br>3/4" x 12"<br>1/2" x 16"<br>1/4" x 24"                                   |  | 1" x 8"<br>3/4" x 12"<br>1/2" x 16"<br>3/8" x 24"                                   |  | 1" x 12"<br>3/4" x 20"<br>1/2" x 24"  |  | 1" x 12"<br>3/4" x 20"<br>1/2" x 24"  |  | 1" x 12"<br>3/4" x 20"<br>1/2" x 24"   |  | 1" x 14"<br>3/4" x 24"  |  |   |  | 1" x 12"<br>3/4" x 16"<br>1/2" x 24" |  |
| 6" x 6" x 1/2"  |  | 6" x 6" x 1/2"  |  | 6" x 6" x 1/2"  |  | 6" x 6" x 1/2"  |  | 6" x 6" x 1/2"  |  | 6" x 6" x 1/2"   |  | 6" x 6" x 1/2"  |  |   |  |                                      |  |
| 4" x 4" x 1/2"<br>(with bar shear)  |  | 3" x 3" x 3/8"<br><br>4" x 4" x 1/2"<br>(with bar shear)                            |  | 3" x 3" x 3/8"<br><br>4" x 4" x 1/2"<br>(with bar shear)                            |  | 3" x 3" x 3/8"<br><br>4" x 4" x 1/2"<br>(with bar shear)                            |  | 3" x 3" x 3/8"<br><br>4" x 4" x 1/2"<br>(with bar shear)                            |  | 3" x 3" x 3/8"<br><br>4" x 4" x 1/2"<br>(with bar shear)                             |  | 3" x 3" x 3/8"<br><br>4" x 4" x 1/2"<br>(with bar shear)                              |  |   |  |                                      |  |
| 2" to 6"  |  | 2" to 6"<br>adjustable  |  | 2" to 6"<br>adjustable  |  | 2" to 6"<br>adjustable  |  | 2" to 6"<br>adjustable  |  | 2" to 6"<br>adjustable   |  | 2" to 6"<br>adjustable  |  |   |  |                                      |  |
| 1/2", 3/4", 1",<br>1-1/2", 4 cavity   |  | 1/4" to 1-1/4",<br>9 cavity   |  | 1/4" to 1-1/4",<br>9 cavity   |  | 1/4" to 1-1/4",<br>9 cavity   |  | 1/4" to 1-1/4",<br>9 cavity   |  | 1/4" to 1-1/4",<br>9 cavity  |  | 1/4" to 1-1/4",<br>9 cavity   |  |   |  |                                      |  |
| 1-1/2",<br>1 cavity   |  | 1/4" to 1",<br>1 cavity   |  | 1/4" to 1",<br>1 cavity   |  | 1/4" to 1",<br>1 cavity   |  | 1/4" to 1",<br>1 cavity   |  | 1/4" to 1",<br>1 cavity  |  | 1/4" to 1",<br>1 cavity   |  |   |  |                                      |  |
| 1/2" to 2",<br>12 gauge   |  | 1/2" to 2",<br>12 gauge   |  | 1/2" to 2",<br>12 gauge   |  | 1/2" to 2",<br>12 gauge   |  | 1/2" to 2",<br>12 gauge   |  | 1/2" to 2",<br>12 gauge  |  | 1/2" to 2",<br>12 gauge   |  |   |  |                                      |  |
| 2" x 4" x 1/2"  |  | 2" x 2-1/2" x 3/8"  |  | 3" x 5" x 3/8"<br>3" x 4" x 1/2"  |  | 2" x 2-1/2" x 3/8"  |  | 3" x 5-3/4" x 1/2"  |  | 3" x 5-3/4" x 1/2"   |  | 3" x 5-3/4" x 1/2"  |  |   |  |                                      |  |
| 3" x 3" x 1/2"<br>(Notcher Station)<br>6" x 6" x 5/16"<br>(Punch Station)           |  | 6" x 6" x 5/16"   |  | 6" x 6" x 5/16"   |  | 6" x 6" x 5/16"   |  | 6" x 6" x 5/16"   |  | 6" x 6" x 5/16"  |  | 6" x 6" x 5/16"   |  |   |  |                                      |  |
| 3/4" to 2"  |  | 3/4" to 2"  |  | 3/4" to 2"  |  | 3/4" to 2"  |  | 3/4" to 2"  |  | 3/4" to 2"   |  | 3/4" to 2"  |  |   |  |                                      |  |
| 12", 24",<br>6" Open-End  |  | 12", 24",<br>6" Open-End  |  | 12", 24",<br>6" Open-End  |  | 12", 24",<br>6" Open-End  |  | 12", 24",<br>6" Open-End  |  | 12", 24",<br>6" Open-End   |  | 12", 24",<br>6" Open-End  |  |   |  |                                      |  |
| 1/2", 3/4", & 1"<br>(16 gauge)  |  | 1/2", 3/4", & 1"<br>(16 gauge)  |  | 1/2", 3/4", & 1"<br>(16 gauge)  |  | 1/2", 3/4", & 1"<br>(16 gauge)  |  | 1/2", 3/4", & 1"<br>(16 gauge)  |  | 1/2", 3/4", & 1"<br>(16 gauge)   |  | 1/2", 3/4", & 1"<br>(16 gauge)  |  |   |  |                                      |  |
| 230/460v, 3 ph<br>220v, 1 ph  |  | 230/460v, 3 ph<br>220v, 1 ph  |  | 230/460v, 3 ph<br>220v, 1 ph  |  | 230/460v, 3 ph<br>220v, 1 ph  |  | 230/460v, 3 ph<br>220v, 1 ph  |  | 230/460v, 3 ph<br>220v, 1 ph   |  | 230/460v, 3 ph<br>220v, 1 ph  |  |   |  |                                      |  |
|  |  |  |  |  |  |  |  |  |  |  |  |  |  |  |  |                                      |  |
| DO 85   |  | 9012  |  | DO 95   |  | 12012   |  | DO 120  |  | DO 135   |  | DO 150  |  | ShearMaster 610   |  |                                      |  |
| Page 14   |  | Page 15   |  | Page 16   |  | Page 17   |  | Page 18   |  | Page 19  |  | Page 20   |  | Page 25   |  |                                      |  |



# 45 Ton

IRONWORKERS



**SINGLE OPERATOR**  
**4 STATIONS**

## PORTA FAB 45

### Capacities and Specifications

Rated On: A36 Mild Steel / 65,000 PSI Tensile

|   |   |
|---|---|
| <b>Punching Capacity</b>                    | 45 ton (41 mt)<br>1-1/8" in 1/2" (28 mm in 12 mm)                                     |
| <b>Special Tooling</b>                      | 2-1/4" (57 mm) Max. Dia.  |
| <b>Throat Depth</b>                         | 4-1/4" (108 mm)   |
| <b>Flat Bar Shear</b>                       | 6" Length (152 mm)<br>1/2" x 4" (12 x 102 mm)<br>3/8" x 6" (10 x 152 mm)              |
| <b>Angle Shear 90°</b>                      | 3" x 3" x 5/16" (76 x 76 x 8 mm)  |
| <b>Angle Shear 45°</b>                      | 2" x 2" x 1/4" (51 x 51 x 6 mm)   |
| <b>Round Rod Shear</b>                      | 3/4" (19 mm)  |
| <b>Brake 8"</b>                             | 25 ton (23 mt)  |
| <b>Brake 12"</b>                            | 20 ton (18 mt)  |
| <b>Open End Brake</b>                       | Max. 1/4" x 3" (6 x 76 mm)<br>[Flat or Angle Iron]                                    |
| <b>Pipe Notcher Schedule 40</b>             | 3/4", 1", 1-1/4", 1-1/2", 2"  |
| <b>Rectangle Notcher</b>                    | 2" x 1-3/4" x 1/4" (51 x 44 x 6 mm)   |
| <b>90° V-Notcher</b>                        | 6" x 6" x 1/8" (152 x 152 x 3 mm)   |
| <b>Rod Shear Round (max.)</b>               | 5 Cavity, 1/4" to 1" (6 mm to 25 mm)  |
| <b>Rod Shear Square (max.)</b>              | 1 Cavity, 1/4" to 3/4" (6 mm to 19 mm)  |
| <b>Unistrut Shear</b>                       | Samples Required  |
| <b>Square Tube Shear</b>                    | 1/2" to 1" (12 mm to 25 mm)<br>12 gauge (0.105" / 2.7 mm)                             |
| <b>Picket Tool</b>                          | 1/2", 3/4" & 1" (12 mm, 19 mm, 25 mm)<br>16 gauge (0.06" / 1.5 mm)                    |
| <b>Weld Coupon Bender (max.)</b>            | 2" wide x 3/8" (51 mm x 10 mm)  |
| <b>Strokes per minute in light material</b> | 10 spm (1/4" stroke) [Punch Station]  |
| <b>Strokes per minute in heavy material</b> | 4 spm (3/4" stroke) [Punch Station]   |
| <b>Hydraulics</b>                           | 2,500 psi (172 bar)   |
| <b>Motor Options (must specify)</b>         | 2 hp 110 v<br>2 hp 1 ph (1.49 kW) 220 v   |
| <b>Dimensions</b>                           | L-38-1/4" (97 cm)<br>W-20" (51 cm)<br>H-39-1/4" (100 cm)<br>H w/base-56-3/4" (144 cm) |
| <b>Shipping Weight (may vary)</b>           | 710 lbs. (322 kg)   |

### STANDARD FEATURES

- 45 ton punch station
- Keyed punch ram for safety
- 2" die holder
- Punch nut with wrench and stripper
- One round punch & die: max. diameter 1"
- Electric remote foot pedal
- Adjustable electric stroke control with scale
- Three-in-one combination tool: Angle shear, Bar shear, and Rod shear
- Tool table work area
- Slug receptacle
- Machine stand with punch & die & tooling storage rack
- 110 volt electrics
- Complies with ANSI B 11.5 safety standards
- Three-year warranty on parts
- Made in USA



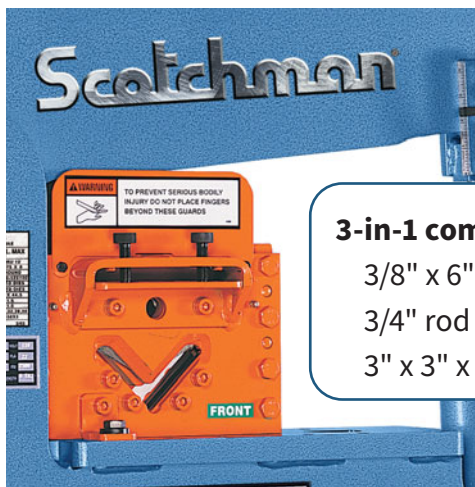


# 45 Ton

IRONWORKERS

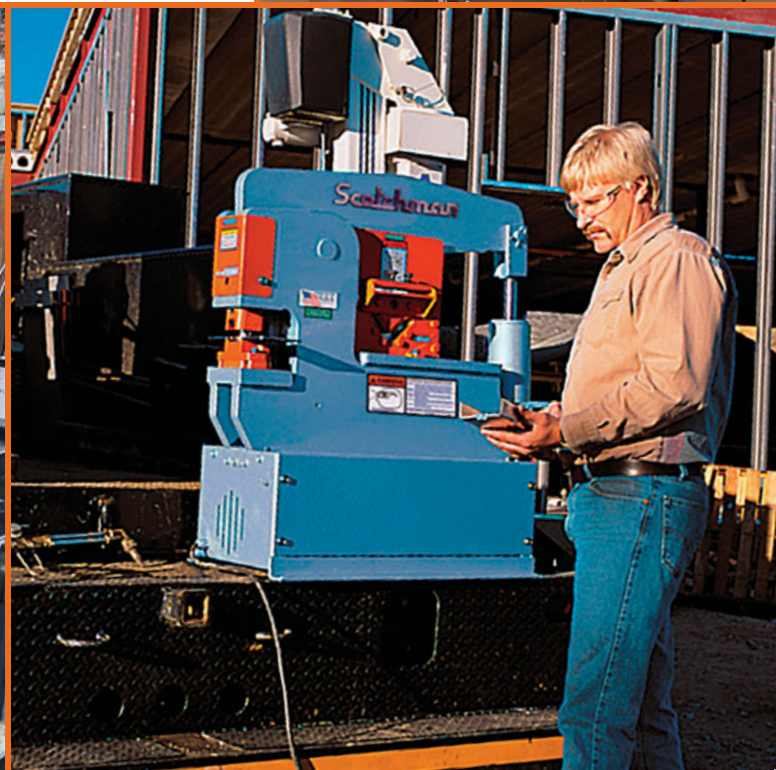
**It's portable, versatile, and designed for in-plant or on-the-job operation; a perfect choice for the fabricator on-the-go!**

With 45-ton punching capacity, this ironworker can punch 1-1/8" hole through 1/2" mild steel and runs on 110-volt power from your standard wall outlet or generator. A 3-in-1 combination tool comes standard and is located in our unique tool table area. This versatile workstation allows additional tooling to be easily swapped in and out so you can customize the machine to fit your needs.



**3-in-1 combination tool:**

- 3/8" x 6" flat bar shear
- 3/4" rod shear
- 3" x 3" x 5/16" angle shear





# 50 Ton

IRONWORKERS



**SINGLE OPERATOR**  
**5 STATIONS**

**50514-EC**

Single punch station



**SINGLE OPERATOR**  
**7 STATIONS**

**5014-ET**

3-station revolving turret punch

## STANDARD FEATURES

- 50 ton punch station
- 2" die holder (per punch station)
- Punch nut & stripper (per punch station)
- One round punch & die: max. diameter 1"
- Keyed punch ram for safety
- Adjustable electric stroke control with scale
- Electric remote foot pedal
- Angle shear
- Flat bar shear with 4-way reversible blade
- Rectangle notcher
- Tool table work area
- Slug receptacle
- Electrical box supplied with emergency palm button and lock-out tag-out accommodations
- Complies with ANSI B 11.5 safety standards
- Forklift accommodations
- Three-year warranty on parts
- Made in USA

## 50514-EC

## 5014-ET

| Capacities and Specifications                 |  |  |
|---|--|--|
| Rated On: A36 Mild Steel / 65,000 PSI Tensile |  |  |
| <b>Punching Capacity</b>                      | 50 ton (45 mt)<br>1-1/4" in 1/2" (32 mm in 12 mm)<br>13/16" in 3/4" (20 mm in 19 mm)   | 50 ton (45 mt)<br>1-1/4" in 1/2" (32 mm in 12 mm)<br>13/16" in 3/4" (20 mm in 19 mm)   |
| <b>Special Tooling</b>                        | 2-1/4" (57 mm) Max. Dia.   | 2-1/4" (57 mm) Max. Dia.   |
| <b>Throat Depth</b>                           | 6" (152 mm)  | 4" (102 mm)  |
| <b>Flat Bar Shear</b>                         | 14" Length (356 mm)<br>3/4" x 4" (19 x 102 mm)<br>1/2" x 8" (12 x 203 mm)<br>3/8" x 10" (10 x 254 mm)<br>1/4" x 14" (6 x 356 mm) | 14" Length (356 mm)<br>3/4" x 4" (19 x 102 mm)<br>1/2" x 8" (12 x 203 mm)<br>3/8" x 10" (10 x 254 mm)<br>1/4" x 14" (6 x 356 mm) |
| <b>Opt. Sabre Blade</b>                       | 1/2" x 10" (12 x 254 mm)<br>3/8" x 12" (10 x 305 mm)   | 1/2" x 10" (12 x 254 mm)<br>3/8" x 12" (10 x 305 mm)   |
| <b>Angle Shear 90°</b>                        | 4" x 4" x 3/8" (102 x 102 x 10 mm)   | 4" x 4" x 3/8" (102 x 102 x 10 mm)   |
| <b>Angle Shear 45°</b>                        | 2" x 2" x 1/4" (51 x 51 x 6 mm)  | 2" x 2" x 1/4" (51 x 51 x 6 mm)  |
| <b>Brake 8"</b>                               | 30 ton (27 mt)   | 25 ton (23 mt)   |
| <b>Brake 12"</b>                              | 25 ton (23 mt)   | 25 ton (23 mt)   |
| <b>Open End Brake</b>                         | Max. 1/4" x 3" (6 x 76 mm)<br>[Flat or Angle Iron]   | Max. 1/4" x 3" (6 x 76 mm)<br>[Flat or Angle Iron]   |
| <b>Pipe Notcher Schedule 40</b>               | 3/4", 1", 1-1/4", 1-1/2", 2"   | 3/4", 1", 1-1/4", 1-1/2", 2"   |
| <b>Rectangle Notcher</b>                      | 2-1/2" x 3" x 5/16" (63 x 76 x 8 mm)<br>2-1/2" x 2-3/4" x 3/8" (63 x 70 x 10 mm)   | 2-1/2" x 3" x 5/16" (63 x 76 x 8 mm)<br>2-1/2" x 2-3/4" x 3/8" (63 x 70 x 10 mm)   |
| <b>90° V-Notcher</b>                          | 6" x 6" x 1/8" (152 x 152 x 3 mm)<br>3" x 3" x 1/4" (76 x 76 x 6 mm)   | 6" x 6" x 1/8" (152 x 152 x 3 mm)<br>3" x 3" x 1/4" (76 x 76 x 6 mm)   |
| <b>Unistrut Shear</b>                         | Samples Required   | Samples Required   |
| <b>Rod Shear Round (max.)</b>                 | 5 Cavity, 1/4" to 1" (6 mm to 25 mm)   | 5 Cavity, 1/4" to 1" (6 mm to 25 mm)   |
| <b>Rod Shear Square (max.)</b>                | 1 Cavity, 1/4" to 3/4" (6 mm to 19 mm)   | 1 Cavity, 1/4" to 3/4" (6 mm to 19 mm)   |
| <b>Square Tube Shear</b>                      | 1/2" to 1" (12 mm to 25 mm)<br>12 gauge (0.105" / 2.7 mm)  | 1/2" to 1" (12 mm to 25 mm)<br>12 gauge (0.105" / 2.7 mm)  |
| <b>Picket Tool</b>                            | 1/2", 3/4" & 1" (12 mm, 19 mm, 25 mm)<br>16 gauge (0.06" / 1.5 mm)   | 1/2", 3/4" & 1" (12 mm, 19 mm, 25 mm)<br>16 gauge (0.06" / 1.5 mm)   |
| <b>Weld Coupon Bender (max.)</b>              | 2" wide x 3/8"<br>(51 mm x 10 mm)  | 2" wide x 3/8"<br>(51 mm x 10 mm)  |
| <b>Strokes per minute in light material</b>   | 34 spm (1/4" stroke) [Punch Station]   | 34 spm (1/4" stroke) [Punch Station]   |
| <b>Strokes per minute in heavy material</b>   | 14 spm (3/4" stroke) [Punch Station]   | 14 spm (3/4" stroke) [Punch Station]   |
| <b>Hydraulics</b>                             | 2,350 psi (162 bar)  | 2,350 psi (162 bar)  |
| <b>Motor Options (must specify)</b>           | 3 hp 3 ph (2.24 kW) 208/230/460, 380/575v<br>5 hp 1 ph (3.73 kW) 220v  | 3 hp 3 ph (2.24 kW) 208/230/460, 380/575v<br>5 hp 1 ph (3.73 kW) 220v  |
| <b>Dimensions</b>                             | L-48-1/4" (122.5 cm)<br>W-23-1/2" (60 cm)<br>H-63-3/4" (161 cm)  | L-48-1/4" (122.5 cm)<br>W-23-1/2" (60 cm)<br>H-70-1/4" (178.5 cm)  |
| <b>Shipping Weight (may vary)</b>             | 1,580 lbs. (717 kg)  | 1,640 lbs. (744 kg)  |





# 65 Ton

IRONWORKERS



**SINGLE OPERATOR**  
**4 STATIONS**

## 6509-24M

### Capacities and Specifications

Rated On: A36 Mild Steel / 65,000 PSI Tensile

|   |   |
|---|---|
| <b>Punching Capacity</b>                    | 65 ton (58 mt)<br>1-1/16" in 3/4" (27 mm in 19 mm)  |
| <b>Special Tooling</b>                      | 4" (102 mm) Max. Dia.   |
| <b>Throat Depth</b>                         | 9" (229 mm)   |
| <b>Flat Bar Shear</b>                       | 24" Length (610 mm)<br>1" x 6" (25 x 152 mm)<br>3/4" x 10" (19 x 254 mm)<br>1/2" x 12" (12 x 305 mm)<br>3/8" x 16" (10 x 406 mm)<br>1/4" x 24" (6 x 610 mm) |
| <b>Opt. Sabre Blade</b>                     | 1" x 6" (25 x 152 mm)<br>1/2" x 16" (12 x 406 mm)   |
| <b>Angle Shear 90°</b>                      | 6" x 6" x 3/8" (152 x 152 x 10 mm)<br>5" x 5" x 1/2" (127 x 127 x 12 mm)  |
| <b>Angle Shear 45° w/Tool</b>               | 3" x 3" x 3/8" (76 x 76 x 10 mm)  |
| <b>w/Bar Shear</b>                          | 4" x 4" x 1/2" (102 x 102 x 12 mm)  |
| <b>Brake 12"</b>                            | 40 ton (36 mt)  |
| <b>Brake 24"</b>                            | 30 ton (27 mt)  |
| <b>Open End Brake</b>                       | Max. 1/4" x 5" (6 x 127 mm)<br>[Flat or Angle Iron]   |
| <b>Pipe Notcher Schedule 40</b>             | 3/4", 1", 1-1/4", 1-1/2", 2"  |
| <b>Rectangle Notcher</b>                    | 2" x 2-1/2" x 3/8" (51 x 63 x 10 mm)  |
| <b>90° V-Notcher</b>                        | 6" x 6" x 5/16" (152 x 152 x 8 mm)  |
| <b>Channel Shear</b>                        | 2" to 5" adj. (51 mm to 127 mm adj.)  |
| <b>Unistrut Shear</b>                       | Samples Required  |
| <b>Rod Shear Round (max.)</b>               | 9 Cavity, 1/4" to 1-1/4" (6 mm to 32 mm)  |
| <b>Rod Shear Square (max.)</b>              | 1 Cavity, 1/4" to 1" (6 mm to 25 mm)  |
| <b>Square Tube Shear</b>                    | 1/2" to 2" (12 mm to 51 mm)<br>12 gauge (0.105" / 2.7 mm)   |
| <b>Picket Tool</b>                          | 1/2", 3/4" & 1" (12 mm, 19 mm, 25 mm)<br>16 gauge (0.06" / 1.5 mm)  |
| <b>Weld Coupon Bender (max.)</b>            | 2" wide x 3/8" (51 mm x 10 mm)  |
| <b>Offset Die Holder</b>                    | Max. 40 ton (36 mt)   |
| <b>Strokes per minute in light material</b> | 58 spm (1/4" stroke) [Punch Station]  |
| <b>Strokes per minute in heavy material</b> | 26 spm (3/4" stroke) [Punch Station]  |
| <b>Hydraulics</b>                           | 2,600 psi (183 bar)   |
| <b>Motor Options (must specify)</b>         | 5 hp 3 ph (3.73 kW) 208/230/460, 380/575v<br>5 hp 1 ph (3.73 kW) 220v   |
| <b>Dimensions</b>                           | L-60-3/4" (154.5 cm)<br>W-30" (76 cm)<br>H-64-1/2" (164 cm)   |
| <b>Shipping Weight (may vary)</b>           | 2,984 lbs. (1,354 kg)   |

### STANDARD FEATURES

- 65 ton punch station
- Keyed punch ram for safety
- Punch gauging table w/fence and scale
- Die holder complete with 2" die insert
- Punch nut with wrench and stripper
- One round punch & die: max. diameter 1-1/4"
- Jog control
- Adjustable electric stroke control with scale
- Electric remote foot pedal
- Flat bar shear with 4-way reversible blade
- Shear table with miter fence
- Angle shear
- Tool table work area
- Slug receptacle
- Two-stage hydraulic pump
- Electrical box supplied with emergency palm button and lock-out tag-out accommodations
- Complies with ANSI B 11.5 safety standards
- Forklift accommodations
- Three-year warranty on parts
- Made in USA



# 90 Ton

IRONWORKERS



**SINGLE OPERATOR**  
**4 STATIONS**

## 9012-24M

### Capacities and Specifications

Rated On: A36 Mild Steel / 65,000 PSI Tensile

|   |   |
|---|---|
| <b>Punching Capacity</b>                    | 90 ton (80 mt)<br>1-1/8" in 1" (29 mm in 25 mm)   |
| <b>Special Tooling</b>                      | 4" (102 mm) Max. Dia.   |
| <b>Throat Depth</b>                         | 12" (305 mm)  |
| <b>Flat Bar Shear</b>                       | 24" Length (610 mm)<br>1" x 8" (25 x 203 mm)<br>3/4" x 12" (19 x 305 mm)<br>1/2" x 16" (12 x 406 mm)<br>1/4" x 24" (6 x 610 mm) |
| <b>Opt. Sabre Blade</b>                     | 1/2" x 22" (12 x 559 mm)<br>3/8" x 24" (10 x 610 mm)  |
| <b>Angle Shear 90°</b>                      | 6" x 6" x 1/2" (152 x 152 x 12 mm)  |
| <b>Angle Shear 45° w/Tool</b>               | 3" x 3" x 3/8" (76 x 76 x 10 mm)  |
| <b>w/Bar Shear</b>                          | 4" x 4" x 1/2" (102 x 102 x 12 mm)  |
| <b>Brake 12"</b>                            | 50 ton (45 mt)  |
| <b>Brake 24"</b>                            | 40 ton (36 mt)  |
| <b>Open End Brake</b>                       | Max. 1/4" x 5" (6 x 127 mm)<br>[Flat or Angle Iron]   |
| <b>Pipe Notcher Schedule 40</b>             | 3/4", 1", 1-1/4", 1-1/2", 2"  |
| <b>Rectangle Notcher</b>                    | 2" x 2-1/2" x 3/8" (51 x 63 x 10 mm)  |
| <b>90° V-Notcher</b>                        | 6" x 6" x 5/16" (152 x 152 x 8 mm)  |
| <b>Channel Shear</b>                        | 2" to 6" adj. (51 mm to 152 mm adj.)  |
| <b>Unistrut Shear</b>                       | Samples Required  |
| <b>Rod Shear Round (max.)</b>               | 9 Cavity, 1/4" to 1-1/4" (6 mm to 32 mm)  |
| <b>Rod Shear Square (max.)</b>              | 1 Cavity, 1/4" to 1" (6 mm to 25 mm)  |
| <b>Square Tube Shear</b>                    | 1/2" to 2" (12 mm to 51 mm)<br>12 gauge (0.105" / 2.7 mm)   |
| <b>Picket Tool</b>                          | 1/2", 3/4" & 1" (12 mm, 19 mm, 25 mm)<br>16 gauge (0.06" / 1.5 mm)  |
| <b>Weld Coupon Bender (max.)</b>            | 2" wide x 3/8" (51 mm x 10 mm)  |
| <b>Offset Die Holder</b>                    | Max. 40 ton (36 mt)   |
| <b>Strokes per minute in light material</b> | 45 spm (1/4" stroke) [Punch Station]  |
| <b>Strokes per minute in heavy material</b> | 24 spm (3/4" stroke) [Punch Station]  |
| <b>Hydraulics</b>                           | 2,600 psi (179 bar)   |
| <b>Motor Options (must specify)</b>         | 5 hp 3 ph (3.73 kW) 208/230/460, 380/575v<br>5 hp 1 ph (3.73 kW) 220v   |
| <b>Dimensions</b>                           | L-76-3/4" (195 cm)<br>W-31" (79 cm)<br>H-71-1/2" (181.5 cm)   |
| <b>Shipping Weight (may vary)</b>           | 4,204 lbs. (1,907 kg)   |

### STANDARD FEATURES

- 90 ton punch station
- Keyed punch ram for safety
- Punch gauging table with fence and scale
- Die holder complete with 2" die insert
- Punch nut with wrench & stripper
- One round punch & die: max. diameter 1-1/4"
- Jog control
- Adjustable electric stroke control with scale
- Electric remote foot pedal
- Angle shear
- Flat bar shear with 4-way reversible blade
- Shear table with miter fence
- Tool table work area
- Slug receptacle
- Two-stage hydraulic pump
- Electrical box supplied with emergency palm button and lock-out tag-out accommodations
- Complies with ANSI B 11.5 safety standards
- Forklift accommodations
- Three-year warranty on parts
- Made in USA





# 120 Ton

IRONWORKERS



**SINGLE OPERATOR**  
**4 STATIONS**

## 12012-24M

### Capacities and Specifications

Rated On: A36 Mild Steel / 65,000 PSI Tensile

|   |   |
|---|---|
| <b>Punching Capacity</b>                    | 120 ton (108 mt)<br>1-1/2" in 1" (38 mm in 25 mm)   |
| <b>Special Tooling</b>                      | 4" (102 mm) Max. Dia.   |
| <b>Throat Depth</b>                         | 12" (305 mm)  |
| <b>Flat Bar Shear</b>                       | 24" Length (610 mm)<br>1" x 12" (25 x 305 mm)<br>3/4" x 20" (19 x 508 mm)<br>1/2" x 24" (12 x 610 mm) |
| <b>Angle Shear 90°</b>                      | 6" x 6" x 1/2" (152 x 152 x 12 mm)  |
| <b>Angle Shear 45° w/Tool</b>               | 3" x 3" x 3/8" (76 x 76 x 10 mm)  |
| <b>w/Bar Shear</b>                          | 4" x 4" x 1/2" (102 x 102 x 12 mm)  |
| <b>Brake 12"</b>                            | 83 ton (75 mt)  |
| <b>Brake 24"</b>                            | 65 ton (59 mt)  |
| <b>Open End Brake</b>                       | Max. 1/4" x 5" (6 x 127 mm)<br>[Flat or Angle Iron]   |
| <b>Pipe Notcher Schedule 40</b>             | 3/4", 1", 1-1/4", 1-1/2", 2"  |
| <b>Rectangle Notcher</b>                    | 2" x 2-1/2" x 3/8" (51 x 63 x 10 mm)  |
| <b>90° V-Notcher</b>                        | 6" x 6" x 5/16" (152 x 152 x 8 mm)  |
| <b>Channel Shear</b>                        | 2" to 6" adj. (51 mm to 152 mm adj.)  |
| <b>Unistrut Shear</b>                       | Samples Required  |
| <b>Rod Shear Round (max.)</b>               | 9 Cavity, 1/4" to 1-1/4" (6 mm to 32 mm)  |
| <b>Rod Shear Square (max.)</b>              | 1 Cavity, 1/4" to 1" (6 mm to 25 mm)  |
| <b>Square Tube Shear</b>                    | 1/2" to 2" (12 mm to 51 mm)<br>12 gauge (0.105" / 2.7 mm)   |
| <b>Picket Tool</b>                          | 1/2", 3/4" & 1" (12 mm, 19 mm, 25 mm)<br>16 gauge (0.06" / 1.5 mm)                                    |
| <b>Weld Coupon Bender (max.)</b>            | 2" wide x 3/8" (51 mm x 10 mm)  |
| <b>Offset Die Holder</b>                    | Max. 40 ton (36 mt)   |
| <b>Strokes per minute in light material</b> | 47 spm (1/4" stroke) [Punch Station]  |
| <b>Strokes per minute in heavy material</b> | 19 spm (3/4" stroke) [Punch Station]  |
| <b>Hydraulics</b>                           | 2,600 psi (179 bar)   |
| <b>Motor Options (must specify)</b>         | 5 hp 3 ph (3.73 kW) 208/230/460, 380/575v<br>5 hp 1 ph (3.73 kW) 220v                                 |
| <b>Dimensions</b>                           | L-79" (201 cm)<br>W-32" (81 cm)<br>H-75" (191 cm)   |
| <b>Shipping Weight (may vary)</b>           | 5,204 lbs. (2,360 kg)   |

### STANDARD FEATURES

- 120 ton punch station
- Keyed punch ram for safety
- Punch gauging table with fence and scale
- Die holder complete with 2" die insert
- Punch nut with wrench & stripper
- One round punch & die: max. diameter 1-1/4"
- Jog control
- Adjustable electric stroke control with scale
- Electric remote foot pedal
- Angle shear
- Flat bar shear with 4-way reversible blade
- Shear table with miter fence
- Tool table work area
- Slug receptacle
- Two-stage hydraulic pump
- Electrical box supplied with emergency palm button and lock-out tag-out accommodations
- Complies with ANSI B 11.5 safety standards
- Forklift accommodations
- Three-year warranty on parts
- Made in USA



# Ironworker *Optional Tooling*

IRONWORKERS

|    |  | PF 45 | 50514-EC    | 5014-ET | 6509    | DO70    | DO85    | FI85    | 9012    | DO95    | 12012   | DO120   | DO135   | DO150   |
|----|--|-------|-------------|---------|---------|---------|---------|---------|---------|---------|---------|---------|---------|---------|
| A  | 6" Brake                                     | •     | •           | •       |         |         |         |         |         |         |         |         |         |         |
| B  | 8" Brake                                     | •     | •           | •       |         |         |         |         |         |         |         |         |         |         |
| C  | 12" Brake                                    | •     | •           | •       | •       | •       | •       | •       | •       | •       | •       | •       | •       | •       |
| D  | 24" Brake                                    |       |             |         | •       | •       | •       | •       | •       | •       | •       | •       | •       | •       |
| E  | Open End Brake                               | •     | •           | •       | •       | •       | •       | •       | •       | •       | •       | •       | •       | •       |
| F  | Pipe Notcher                                 | •     | •           | •       | •       | •       | •       | •       | •       | •       | •       | •       | •       | •       |
| G  | Rectangle Notcher                            | •     |             |         | •       |         |         |         | •       |         | •       |         |         |         |
| H  | 90° V-Notcher                                | •     | •           | •       | •       | •       | •       | •       | •       | •       | •       | •       | •       | •       |
| I  | Square Tube Shear                            | •     | •           | •       | •       | •       | •       | •       | •       | •       | •       | •       | •       | •       |
| J  | Rod Shear                                    | •     | •           | •       | •       | •       |         |         | •       | •       | •       | •       | •       | •       |
| K  | Unistrut Shear                               | •     | •           | •       | •       | •       | •       | •       | •       | •       | •       | •       | •       | •       |
| L  | Weld Coupon Bender                           | •     | •           | •       | •       | •       | •       | •       | •       | •       | •       | •       | •       | •       |
| M  | Picket Tool                                  | •     | •           | •       | •       | •       | •       | •       | •       | •       | •       | •       | •       | •       |
| N  | Channel Shear                                |       |             |         | •       | •       |         | •       | •       | •       | •       | •       | •       | •       |
| O  | Channel Shear Blades                         |       |             |         |         |         | •       |         |         |         |         |         |         |         |
| P  | 6"x 6" Die Holder                            |       |             |         | •       | •       | •       | •       | •       | •       | •       | •       | •       | •       |
| Q  | Offset Die Holder                            |       |             |         | •       | •       | •       | •       | •       | •       | •       | •       | •       | •       |
| R  | Urethane Stripper                            |       |             |         | •       | •       | •       | •       | •       | •       | •       | •       | •       | •       |
| S  | Hydraulic Hold Down                          |       |             |         | •       |         |         | •       | •       |         | •       | •       | •       | •       |
| T  | 4" Angle Iron Miter Guide                    |       | •           | •       |         |         |         |         |         |         |         |         |         |         |
| U  | 6" Angle Iron Miter Guide                    |       |             |         | •       | •       |         |         | •       | •       | •       | •       | •       | •       |
| V  | Optional Punch for Notcher End               |       |             |         |         |         | •       |         |         |         |         |         |         |         |
| W  | Open End Brake for Notcher End               |       |             |         |         |         | •       |         |         |         |         |         |         |         |
| X  | 30" Material Stop                            | •     |             |         |         |         |         |         |         |         |         |         |         |         |
| Y  | 48" Back Gauge                               |       | •           | •       | •       | •       | •       | •       | •       | •       | •       | •       | •       | •       |
| Z  | Brake Table w/ scale & squaring arm 12"      | •     | •           | •       | •       | •       | •       | •       | •       | •       | •       | •       | •       | •       |
| Z  | Brake Table w/ scale & squaring arm 24"      |       |             |         | •       | •       | •       | •       | •       | •       | •       | •       | •       | •       |
| Z  | Brake Length Gauge w/ scale 8"               | •     | •           | •       |         |         |         |         |         |         |         |         |         |         |
| Z  | Brake Length Gauge w/ scale 12"              | •     | •           | •       | •       | •       |         |         | •       | •       | •       | •       | •       | •       |
| Z  | Brake Length Gauge w/ scale 24"              |       |             |         | •       | •       |         |         | •       | •       | •       | •       | •       | •       |
| AA | Shear Table w/ Miter Fence                   |       | •           | •       |         |         |         |         |         |         |         |         |         |         |
| BB | Punch Gauging Table w/ Fence & Scale         |       | •           | •       |         |         |         |         |         |         |         |         |         |         |
| CC | Unequal Leg Blades for Angle Shear           |       |             |         | •       | •       |         |         | •       | •       | •       | •       | •       | •       |
| DD | Multi-Loc Punch Gauging Extension: 36" & 85" |       |             |         | •       | •       | •       | •       | •       | •       | •       | •       | •       | •       |
| EE | Punch Table Extension                        |       |             |         | •       | •       | •       | •       | •       | •       | •       | •       | •       | •       |
| FF | Tool table extension with punch & die drawer |       | •           | •       | •       | •       |         |         | •       | •       | •       | •       | •       | •       |
| GG | Laser Light (Shear)                          |       | •           | •       | •       | •       |         |         | •       | •       | •       | •       | •       | •       |
| HH | LED Lights                                   | • (P) | • (P, S, N) | • (P&S) | • (P&S) | • (P&S) | • (P&S) | • (P&S) | • (P&S) | • (P&S) | • (P&S) | • (P&S) | • (P&S) | • (P&S) |
| II | Jog Control                                  |       | •           | •       |         |         |         |         |         |         |         |         |         |         |
| JJ | 24" x 5' Conveyor w/ angle iron support      |       | •           | •       | •       | •       | •       | •       | •       | •       | •       | •       | •       | •       |

• Punch    • Punch & Shear    • Punch, Shear & Notch



# Ironworker *Optional Tooling*

IRONWORKERS



6" Brake (A)



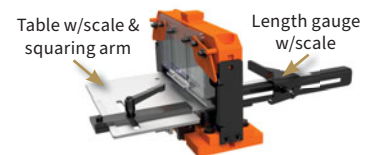
8" Brake (B)



12" Brake (C)



24" Brake (D)



Brake Options (Z)  
(sold separately)



Open End Brake (E)



Pipe Notcher (F)



Rectangle Notcher (G)



90° V-Notcher (H)



Square Tube Shear (I)



Rod Shear (J)



Unistrut Shear (K)



Weld Coupon Bender (L)



Picket Tool (M)



Channel Shear (N)



Channel Shear Blades (O)  
(DO85 only)



6" x 6" Die Holder (P)



Offset Die Holder (Q)



Urethane Stripper (R)



Hydraulic Hold Down (S)



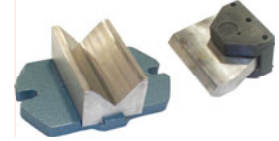
4" Angle Iron Miter Guide (T)



6" Angle Iron Miter Guide (U)



Optional Punch for Notcher End (V)  
(DO85 only)



Open End Brake for Notcher End (W)  
(DO85 only)



30" Material Stop (X)



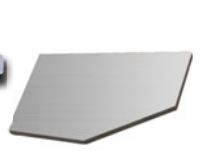
48" Back Gauge (Y)



Shear Table w/ Miter Fence (AA)



Punch Gauging Table w/ Fence & Scale (BB)



Unequal Leg Blades for Angle Shear (CC)  
66°, 70°, 74°, or 80°



Multi-Loc Punch Gauging Extension: 36" & 85" (DD)



Punch Table Extension (EE)



Tool table extension with punch & die drawer (FF)



Laser Light (GG)



LED Lights (HH)



Jog Control (II)



24" x 5' conveyor with angle iron support (JJ)  
← (attached to DO 70)  
(attached to 5014-ET) →



## SOMETIMES, A UNIQUE APPLICATION REQUIRES A CUSTOM-BUILT SOLUTION.

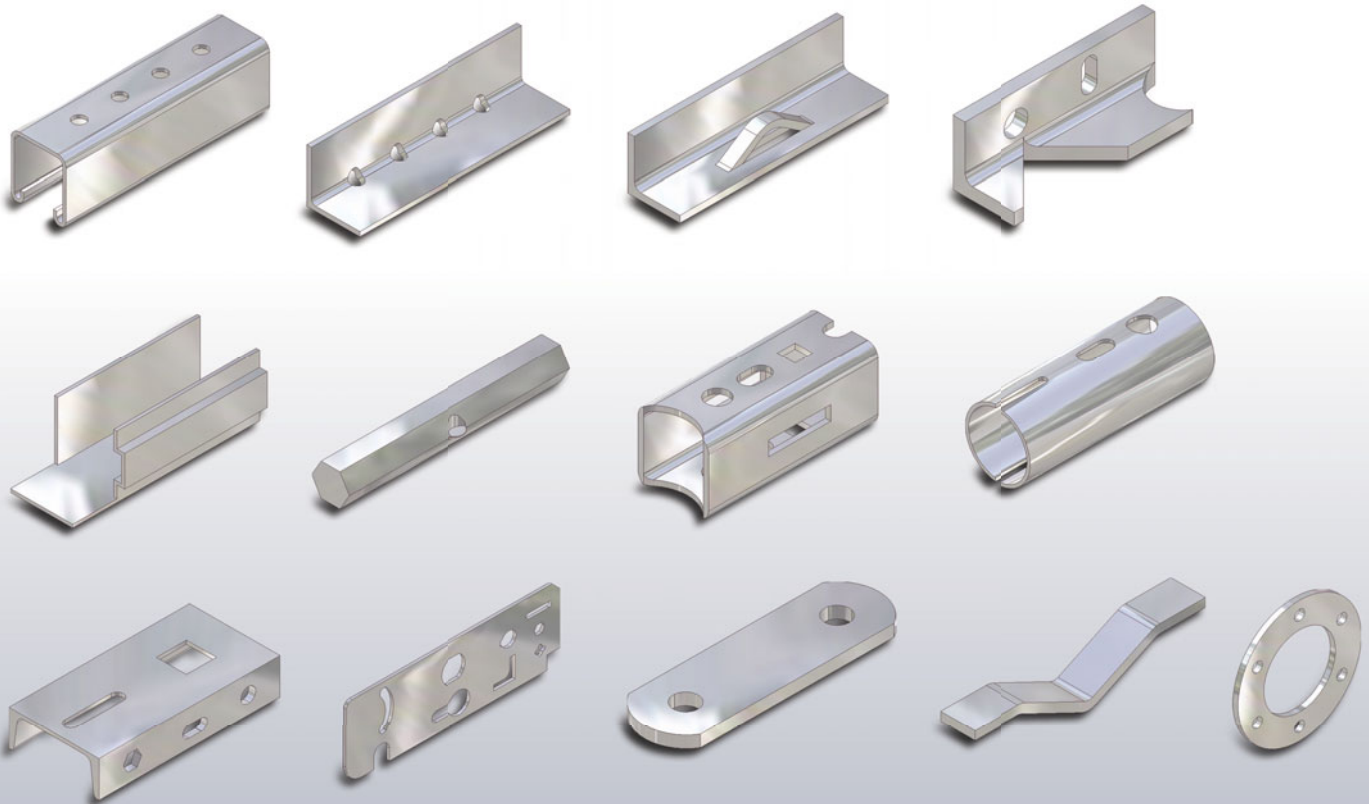
If you need something beyond the standard tooling we offer, our team of engineers is equipped to design and build a tailored solution built to your specifications.

From our plant in Philip, South Dakota, each step of this process from design and development to completion is done in-house.

We thoroughly test each tool to verify performance and ensure value for your investment. With quality manufactured into every tool, we assure that our tools will stand up to the tough demands of your applications.



### Examples of Special Applications We've Built Tooling For





MACHINES  
THAT WORK  
AS HARD  
AS YOU DO.

**Scotchman**<sup>TM</sup>

Metal Fabricating Solutions

Sales partner in México:

**ACAT**

ACAT Mexicana  
Ave. Regio Parque #200 Regio Parque Industrial  
Apodaca , Nuevo León, México CP. 66633



acat@acatmexicana.com



TEL. 81 8354 8910



www.acatmexicana.com